

ARDEN JR SURGERY

Every moment counts,
early action starts with screening.

For Males

Essential Cancer Screening for Male

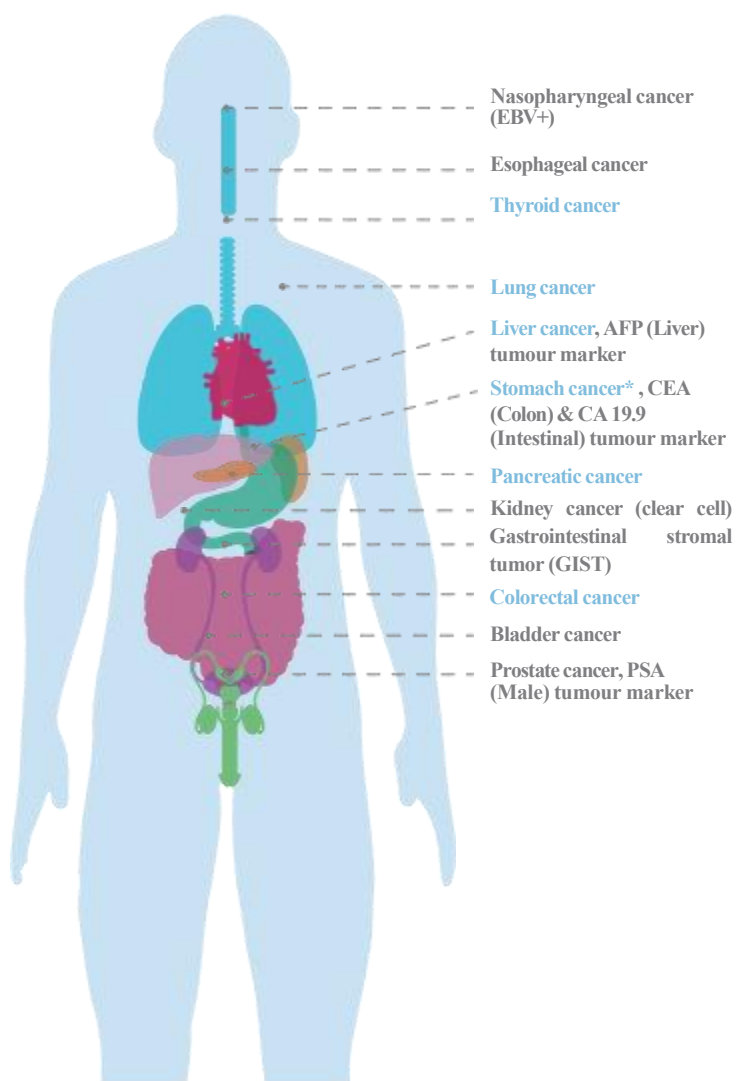
(M5) \$1,071.00 before GST

covers 4 tumour markers & 6 cancers (in blue)

Advanced Cancer Screening for Male

(M12) \$2,010.00 before GST

covers 4 tumour markers & 12 cancers



For Females

Essential Cancer Screening for Female

(F5) \$1,280.00 before GST

covers 5 tumour markers & 6 cancers^

Comprehensive Cancer Screening for Female

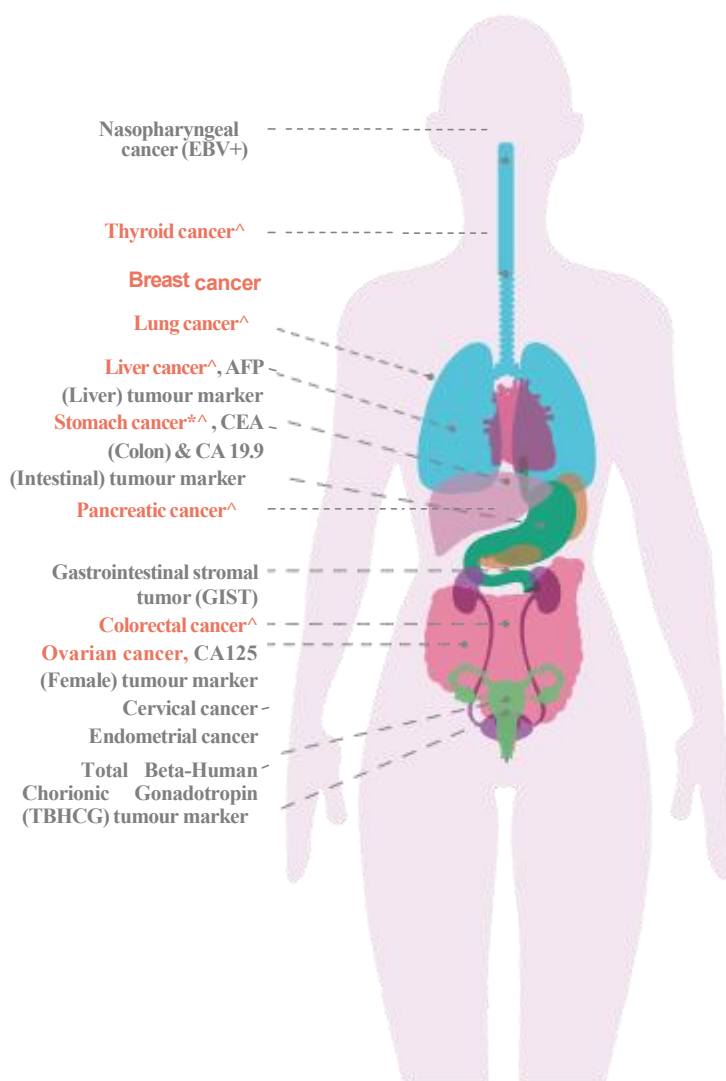
(F7) \$1,760.00 before GST

covers 5 tumour markers & 8 cancers (in red)

Advanced Cancer Screening for Female

(M12) \$2,022.00 before GST

covers 5 tumour markers & 12 cancers



^Cancer list for F5

*Parkway Laboratories uses GASTROClear Test to screen Stomach cancer for M5, F5 & F7.

LucenceINSIGHT™ is used for other multi-cancer early detection (MCD) next-generation sequencing tests.

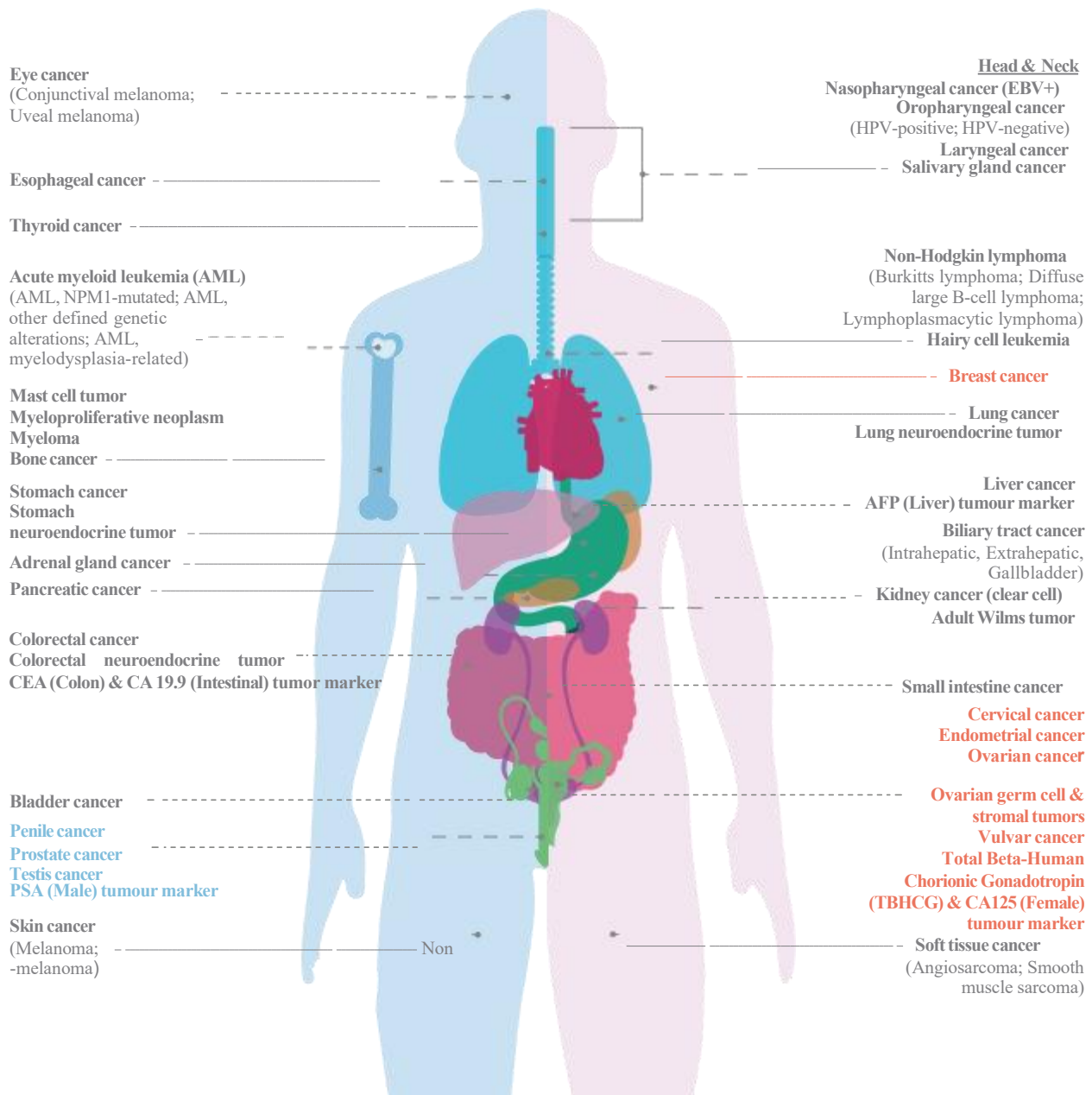
Precision Cancer Screening Package

(M50) \$3,450.00 before GST

covers 4 tumour markers & 50 cancers

(F50) \$3,500.00 before GST

covers 5 tumour markers & 50



Note: cancer types listed in blue are for males where as cancer types listed in red are for females.

Recommendations to patients

GASTROClear and LucenceINSIGHT™ is recommended for patients who:

- are aged 40+
- have elevated risk of cancer (family history, diet, lifestyle)

The test is not recommended for patients who:

- are pregnant
- are in cancer remission for < 3 years
- had an allogenic bone transplant or a blood transfusion < 2 weeks prior to sample collection

No fasting is needed. Patient should refrain from heavy meals 4 hours before.

**We support your journey so you can stay present for
life's most important mile stones**